

MPO Cable Assemblies

MPO assemblies are becoming increasingly popular due to the high density applications in the marketplace. MPO assemblies are offered with 8, 12, and 24 fiber connector options. Available with ribbon, round, and trunk cable configurations, Amphenol's MPO connectors meet TIA/EIA 604-5 and IEC 61754-7. MPO assemblies are offered with straight, crossed, or QSFP pin outs.

Used in a variety of applications including, structured cabling, optical switching, parallel optics, and fiber management systems. Ideal for use as 40G (40GBASE-SR4) links in between two QSFP+ transceivers, and as backend trunk or distribution cable. The 24 fiber MPO connector is able to deliver three individual 40G links or a single 100G link for parallel optics. Please contact Amphenol for assistance with configuring the required cable assembly.



Benefits

- Compatible with industry standard connectors
- All assemblies meet **TIA/EIA and IEC** intermateability standards
- High fiber capacity for dense applications
- Push/pull latching mechanism to ensure connection
- Pins on male connector ensure proper alignment
- MPO cables also available in a patented traceable style to locate cables in high density applications
- Multiple accessory options** available (push/pull tab and boots) to assist with routing and congestion problems in tight spaces

Features

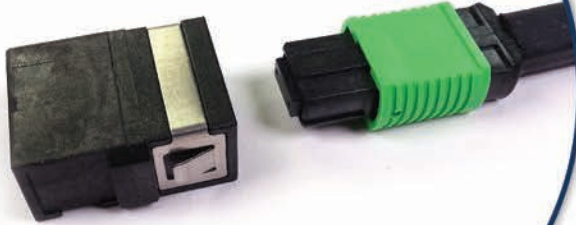
- 8, 12, and 24 fiber options
- Available in A, B, and C polarity per TIA 568-C
- Custom wiring configuration available
- Available in a wide variety of connector types, cable designs, and lengths
- Customized breakout lengths and fanout sizes available
- RoHS compliant
- Available in both Singlemode and Multimode fiber types
- Straight, crossed, and QSFP wiring available



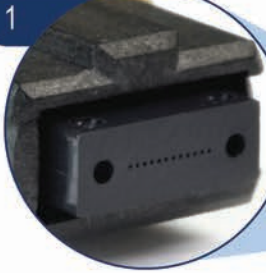
Applications

Data Centers Small Cells
IT/Datacom Wireless

1. Thermoplastic ferrule
2. Color-coded housings
3. Optional flippable key
4. Alignment pins
5. Various boot options



Connector w/ Adapter



1

Ribbon Cable



3



5



2



4

Specifications

Insertion Loss: $\leq 0.75\text{dB}$, APC
 $\leq 0.50\text{dB}$, M/M
 $\leq 0.35\text{dB}$, Low Loss

Return Loss: $\leq -55\text{dB}$ S/M Angle (APC)

Durability: $< 0.2\text{dB}$ change, 200 mating cycles

MPO

Push/Pull Tab

Designed with high density applications in mind, Amphenol's MPO push/pull tab makes inserting and removing MPO assemblies a breeze. In high density environments like data centers, where many MPO connectors are stacked beside one another, it can be difficult to grasp the MPO by the sleeve to insert or remove. By holding the end of the push/pull tab, one can more easily push to insert the MPO or pull to remove.

The Amphenol push/pull tab is easily installed over the MPO connector, making it quick and simple to install in the field.



EASY TO INSTALL

Method 1



1 Start with push/pull tab in hand



2 Holding tab perpendicular to MPO, slide over the MPO sleeve



3 Rotate tab over sleeve



4 When fully rotated the tab will snap in place

Method 2



1 Start by placing tab over MPO boot



2 Slide tab forward over MPO rear body until it snaps in place



Top View



Bottom View

Final Position

Push/Pull Tab is only compatible with Amphenol MPO



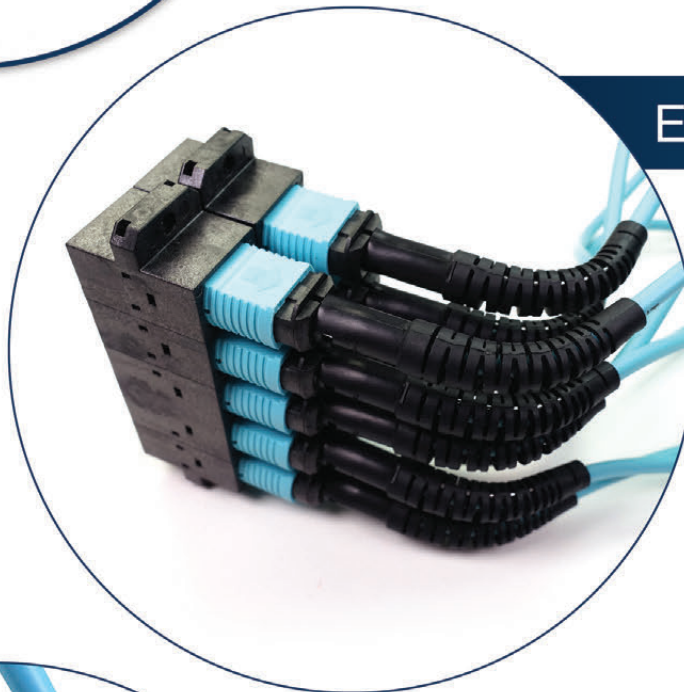
MPO Flexible Boot

Amphenol's MPO connector flexible strain relief boots simplify cable routing in high density panels. The installer can angle the flexible boot on each individual cable to any desired direction to help neatly dress the fibers and improve cable routing.

When high density panels are fully populated, the flexible boot is a great benefit over rigid boots for cable routing. The angle can be adjusted from 0 degree to 90 degrees while in the field.



Easy Cable Routing



Flex To Any Position

