

ST Adapters

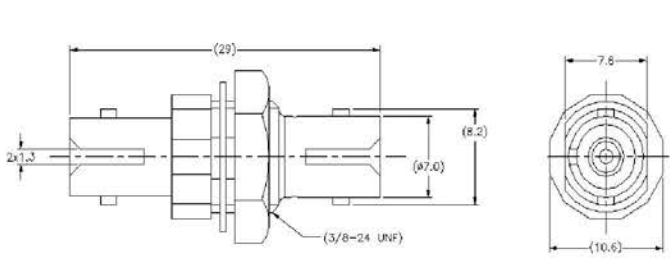
Amphenol ST adapters are manufactured to be mechanically and optically intermateable with ST and STII products. Ideally suited for Datacom and Telecom applications in densely packed patch panels.



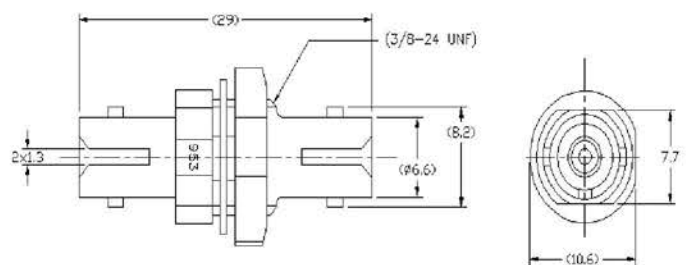
Part # (ST Adapter)	Description	Alignment Sleeve Material	Flange Type	Body
953-120-5000	ST adapter, plastic body, singlemode, D-hole	Zirconia	Feed-through, D-hole	Black Plastic
953-120-5003	ST adapter, metal body, singlemode, D-hole	Zirconia	Feed-through, D-hole	Metal
953-122-5002	ST adapter, plastic body, multimode, D-hole	Phosphor Bronze	Feed-through, D-hole	White Plastic
953-122-5003	ST adapter, metal body, multimode, D-hole	Phosphor Bronze	Feed-through, D-hole	Metal

Part # (ST Hybrid Adapter)	Description	Alignment Sleeve Material	Flange Type	Body
954-953-5000	SC-ST hybrid simplex adapter, singlemode	Zirconia	Screw mount	Blue/Black Plastic
954-953-5001	SC-ST hybrid simplex adapter, multimode	Phosphor Bronze	Screw mount	Blue/Black Plastic

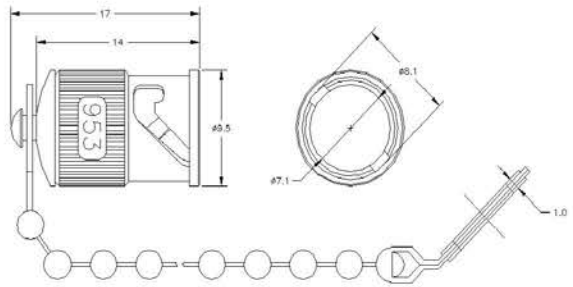
Part # (Accessories)	Description
953-1061	ST dust cap with chain, 0.130" diameter ring
953-1079	ST dust cap with chain, 0.380" diameter ring



ST Plastic Adapter, Feed-through, D-Hole



ST Metal Adapter, Feed-through, D-Hole



ST Dust Cap with Chain (953-1061)